

MicroFinS Installation & Set-Up Guide:

A. How do I install MicroFinS on Server?

If MicroFinS is to be run in LAN, it requires installation of MicroFinS database on Server and Installation of MicroFinS client on work stations / Desktops. In case of Single User Pack, both the installations shall be performed on same workstation.

The procedure for extraction of MicroFinS package is as follows:

- 1) Download the MicroFinSSetup from the download link provided.
- 2) Create folder MICROFINSSetup in "C:"
- 3) Unzip the MICROFINS installation package downloaded, into newly created MICROFINSSetup folder on C:
- 4) Cut Microfins.bak from "C:\ MICROFINSSetup" and paste to "C:\"

The procedure for installation of Microfins database is as follows:

- 1) Decide on whether you shall be installing MicroFinS on MS SQL Server 2000/2005 OR SQL Express.
- 2) If you are using MS SQL Server 2000/2005, get MS SQL Server installed on Server. Remember the User Id and Password while installing the MS SQL Server on Server.

3) If you are using MS SQL Server 2000/2005, following process is to be followed for MicroFinS database creation:

- i. Open SQL Server 2000/2005 Management Studio installed on your computer.
- ii. Create database 'Microfins'.
- iii. Restore the back-up file of MicroFinS database from "C:\Microfins.bak"
- iv. Change Login Parameters as follows:
 - o Go to MicroFinS Application path as given during MicroFinS installation process.
 - o Open LoginParam.ini using notepad.
 - o Change Password for 'SA' user. Replace the 'SA' user password with your SQL server 2000/2005 password.

Software Solution for Credit Societies, Credit Unions & Micro Finance Institutions

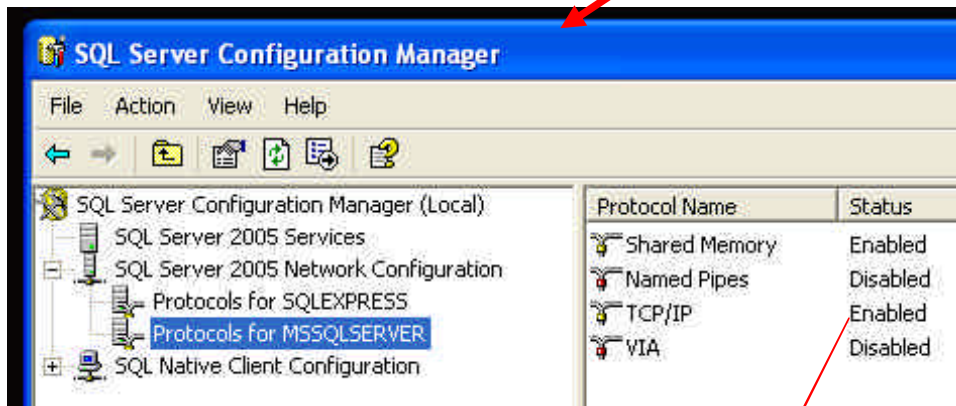
- o Save & Close Login.ini.
- v. Copy the provided "LIB" File into C:\Program Files\ MicroFinS folder (application path as given during MicroFinS installation process).

4) If you are using SQL Server Express Edition, following process is to be followed for Express Edition installation and MicroFinS database creation:

- i. **Express Edition Download & Extraction:** You need to download and install Express Edition. [Click here](#) to download Express Edition from Microsoft site. Download "**SQLEXPR.exe**" file from this page.
- ii. Dot net framework 2.0 and windows installer 3.1 is pre-requisite for installing SQL Express edition, please make sure that it is installed on your computer.
- iii. Install dot net framework 2.0 if its not already installed and then install windows installer 3.1. Then click on SQLEXPR.exe to install SQL Express Edition.
- iv. Install sql express with default instance option [Not with named instance]
- v. Then select the option "Mixed mode authentication". In mixed mode authentication, provide the password as per your wish. Then use this same password in Login.ini.
- vi. Follow onscreen instructions to install the sql express completely.
- vii. After Installing SQL Server Express Edition, restart the computer manually.
- viii. Upon restarting the computer, go to sql server configuration manager option.
- ix. Set the options required to configure SQL express completely as given below:

(Go to Start >> Programs >> Microsoft SQL Server 2005 >> Configuration Tools >> SQL Server Configuration Manager as shown below)

Software Solution for Credit Societies, Credit Unions & Micro Finance Institutions



Enable TCP/IP Option

- x. Double click on MicroFinSDBSetup_Express.bat present within the MicroFinS setup directory and follow the instructions.
- xi. Change Login Parameters as follows:
 - o Go to MicroFinS Application path as given during MicroFinS installation process. (For Ex. - C
 - o Open LoginParam.ini using notepad.
 - o Change Password for 'SA' user. Replace the 'SA' user password with your SQL Express password.
 - o Save & Close Login.ini.
- xii. Copy the File provided "LIB" into C:\Program Files\ MicroFinS folder (application path as given during MicroFinS installation process).

This completes MicroFinS database creation on the Server. If the server is also going to be operated as MicroFinS client, you need to install MicroFinS client by following the client installation process as explained in next question.

Software Solution for Credit Societies, Credit Unions & Micro Finance Institutions

Same client installation procedure needs to be followed for installation of MicroFinS client on the other desktops in the LAN. On the other desktops in the LAN, installation of database (as explained in question 3) is not required.

B. How do I install MicroFinS client on desktops / server?

Following steps have to follow to Install MicroFins client on desktop:

- 1) Copy MICROFINSSetup folder to the workstation from Server "C:\". This folder is created on server during the extraction of MicroFinS setup on server.
- 2) Double click MicroFinsClientSetup.bat from "MICROFINSSetup" folder.
- 3) Wait until Microfins setup is completed successfully.
- 4) Go to MICROFINS Application path as given during MICROFINS installation process.
- 5) Copy the File provided "LIB" into this folder.
- 6) Open LoginParm.ini using notepad.
- 7) Change the Server Parameter as follows:
 - a. If database exists on the same server/computer on which you are installing the client, change the "Server=bank" to "Server=."
 - b. If you are installing the client on other desktops in the LAN, change the "Server=bank" to "Server=ServerName" where ServerName is the (computer) name of the server on which MicroFinS database is installed.
- 8) Change the User Id and Password as follows:
 - a. If the database is on MSDE, then do not make any changes to the user id and password.
 - b. If the database is SQL Server 2000/2005, then change user id and password equal to user id and password of the SQL Server installed.



Software Solution for Credit Societies, Credit Unions & Micro Finance Institutions

9) Save & Close the file LoginParm.ini.

Follow below steps to enter MicroFinS:

- 1) Start MICROFINS from "Start > Programs > Microfins > Microfins".
- 2) When the MicroFinS application is started for the first time, a small window shall pop-up asking for following configuration details:
 - a. Financial Year Start Date: Its start date of financial Year in which you plan to start the transactions into MicroFinS (If you plan to make the back dated entries for previous year period transactions, specify the start date of previous year here).
 - b. Financial Year End Date: Its end date of financial year for which you have entered start date above.
 - c. Closing Balance Date: It's a date previous to date of starting actual transactions entries into MicroFinS. This actual transaction start date is called as "Cash Book Start Date" and it shall be set as date next to Closing Balance Date.
- 3) Enter username= admin & password=admin.
- 4) The admin user shall login into MicroFinS. The current working date shall be the 'Closing Balance Date' specified above. You are expected to finish complete configuration activities explained in the question below before you start regular transactions through MicroFinS on the Cash Book Start Date specified.